

SGOL1 Antibody



PACO21875

Product Information

Size:

100ul

Reactivity:

Human

Source:

Rabbit

Isotype:**Protein Background:****Gene ID:**

SGO1

Uniprot

Q5FBB7

Synonyms:

Shugoshin-like 1; hSgo1; Serologically defined breast cancer antigen NY-BR-85; SGO1;

Applications:

ELISA, WB

Immunogen:

Synthesized peptide derived from internal of human SGOL1.

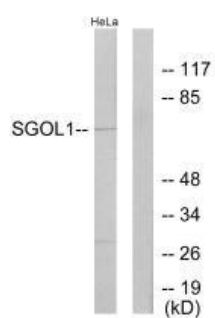
Recommended dilutions:

ELISA:1:2000-1:10000, WB:1:500-1:3000

Storage:

Rabbit IgG in phosphate buffered saline (without Mg²⁺ and Ca²⁺), pH 7.4, 150mM NaCl, 0.02% sodium azide and 50% glycerol.

Product Images



Western blot analysis of extracts from HeLa cells, using SGOL1 antibody.