

RBM26 Antibody



PACO21876

Product Information

Size:

100ul

Reactivity:

Human, Mouse

Source:

Rabbit

Isotype:

Applications:

ELISA, WB

Recommended dilutions:

ELISA:1:2000-1:10000, WB:1:500-1:3000

Protein Background:

Gene ID:

RBM26

Uniprot

Q5T8P6

Synonyms:

RNA-binding motif protein 26; RNA-binding protein 26; CTCL tumor antigen se70-2; C13orf10; PRO1777

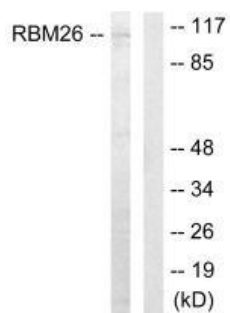
Immunogen:

Synthesized peptide derived from C-terminal of human RBM26.

Storage:

Rabbit IgG in phosphate buffered saline (without Mg²⁺ and Ca²⁺), pH 7.4, 150mM NaCl, 0.02% sodium azide and 50% glycerol.

Product Images



Western blot analysis of extracts from Jurkat cells, using RBM26 antibody.