

MLK4 Antibody



PACO21877

Product Information

Size:

100ul

Reactivity:

Human

Source:

Rabbit

Isotype:

Applications:

ELISA, WB

Recommended dilutions:

ELISA:1:2000-1:10000, WB:1:500-1:3000

Protein Background:

Gene ID:

MAP3K21

Uniprot

Q5TCX8

Synonyms:

Mitogen-activated protein kinase kinase kinase; EC 2.7.11.25; Mixed lineage kinase 4; MLK4; KIAA1804

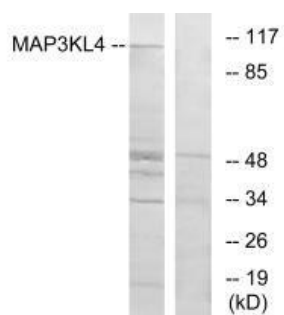
Immunogen:

Synthesized peptide derived from internal of human MAP3KL4.

Storage:

Rabbit IgG in phosphate buffered saline (without Mg²⁺ and Ca²⁺), pH 7.4, 150mM NaCl, 0.02% sodium azide and 50% glycerol.

Product Images



Western blot analysis of extracts from HT-29 cells, using MAP3KL4 antibody.