

MAEA Antibody



PACO21882

Product Information

Size:

100ul

Reactivity:

Human, Mouse, Rat

Source:

Rabbit

Isotype:

Applications:

ELISA, WB

Recommended dilutions:

ELISA:1:2000-1:10000, WB:1:500-1:3000

Protein Background:

Gene ID:

MAEA

Uniprot

Q7L5Y9

Synonyms:

Macrophage erythroblast attacher; Erythroblast macrophage protein; Cell proliferation-inducing gene 5 protein; Lung cancer-related protein 10; HLC-10

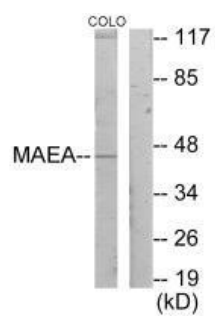
Immunogen:

Synthesized peptide derived from internal of human MAEA.

Storage:

Rabbit IgG in phosphate buffered saline (without Mg²⁺ and Ca²⁺), pH 7.4, 150mM NaCl, 0.02% sodium azide and 50% glycerol.

Product Images



Western blot analysis of extracts from COLO205 cells, using MAEA antibody.