

# MOB1B Antibody



PACO21883

---

## Product Information

**Size:**

100ul

**Reactivity:**

Human, Mouse

**Source:**

Rabbit

**Isotype:**

**Protein Background:**

**Gene ID:**

MOB1B

**Uniprot**

Q7L9L4

**Synonyms:**

MATS2; MOB1; Mps One Binder kinase activator-like 1A;

**Applications:**

ELISA, WB

**Immunogen:**

Synthesized peptide derived from internal of human MOL1A.

**Recommended dilutions:**

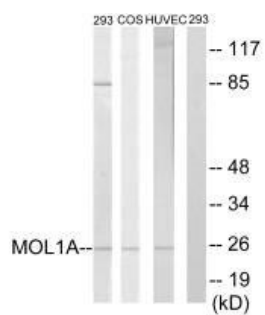
ELISA:1:2000-1:10000, WB:1:500-1:3000

**Storage:**

Rabbit IgG in phosphate buffered saline (without Mg<sup>2+</sup> and Ca<sup>2+</sup>), pH 7.4, 150mM NaCl, 0.02% sodium azide and 50% glycerol.

## Product Images

---



Western blot analysis of extracts from 293 cells, COS-7 cells and HUVEC cells all treated with IFN (2500U/ml, 30mins), using MOL1A antibody.