

MOB3B Antibody



PACO21887

Product Information

Size:

100ul

Reactivity:

Human, Mouse

Source:

Rabbit

Isotype:

Applications:

ELISA, WB

Recommended dilutions:

ELISA:1:2000-1:10000, WB:1:500-1:3000

Protein Background:

Gene ID:

MOB3B

Uniprot

Q86TA1

Synonyms:

Mps one binder kinase activator-like 2B; Mob1 homolog 2b; Protein Mob3B; MOBKL2B; MOB3B

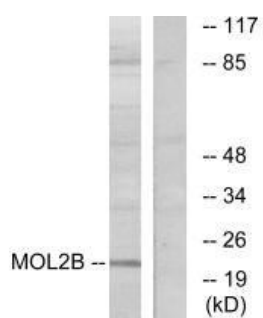
Immunogen:

Synthesized peptide derived from internal of human MOL2B.

Storage:

Rabbit IgG in phosphate buffered saline (without Mg²⁺ and Ca²⁺), pH 7.4, 150mM NaCl, 0.02% sodium azide and 50% glycerol.

Product Images



Western blot analysis of extracts from COLO cells, using MOL2B antibody.