

ADCK1 Antibody



PACO21889

Product Information

Size:

100ul

Reactivity:

Human, Mouse

Source:

Rabbit

Isotype:

IgG

Applications:

ELISA, WB

Recommended dilutions:

ELISA:1:2000-1:10000, WB:1:500-1:3000

Protein Background:

The function of this protein is not yet clear. It is not known if it has protein kinase activity and what type of substrate it would phosphorylate (Ser, Thr or Tyr). Li W. B. , Submitted (FEB-2003) to the EMBL/GenBank/DDBJ databases.

Gene ID:

ADCK1

Uniprot

Q86TW2

Synonyms:

Uncharacterized aarF domain-containing protein kinase 1 [Precursor]; EC 2.7.11; ADCK1;

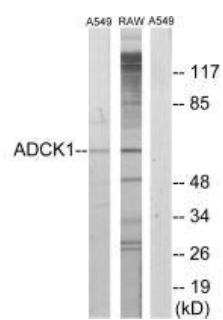
Immunogen:

Synthesized peptide derived from internal of human ADCK1.

Storage:

Rabbit IgG in phosphate buffered saline (without Mg²⁺ and Ca²⁺), pH 7.4, 150mM NaCl, 0.02% sodium azide and 50% glycerol.

Product Images



Western blot analysis of extracts from A549 cells and RAW264.7 cells, using ADCK1 antibody.