

Product Information

Size:

100ul

Reactivity:

Human, Mouse

Source:

Rabbit

Isotype:

IgG

Applications:

ELISA, WB

Recommended dilutions:

ELISA:1:2000-1:10000, WB:1:500-1:3000

Protein Background:

Protein kinase with a significantly reduced Ca^{2+} /CAM affinity and dependence compared to other members of the CaMK family. May play a role in the down-regulation of CRE-dependent gene activation probably by phosphorylation of the CREB coactivator CRTC2/TORC2 and the resulting retention of TORC2 in the cytoplasm. By similarity. Hillier L. W., Nature 434:724-731(2005).

Gene ID:

DCLK2

Uniprot

Q8N568

Synonyms:

Serine/threonine-protein kinase DCLK2; EC 2.7.11.1; Doublecortin-like and CAM kinase-like 2; Doublecortin-like kinase 2; DCLK2

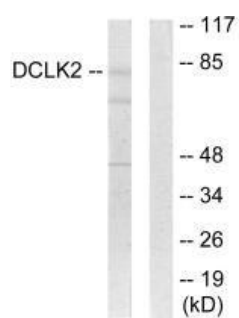
Immunogen:

Synthesized peptide derived from internal of human DCLK2.

Storage:

Rabbit IgG in phosphate buffered saline (without Mg^{2+} and Ca^{2+}), pH 7.4, 150mM NaCl, 0.02% sodium azide and 50% glycerol.

Product Images



Western blot analysis of extracts from HepG2 cells, using DCLK2 antibody.