

SPIC Antibody



PACO21897

Product Information

Size:

100ul

Reactivity:

Human

Source:

Rabbit

Isotype:

Protein Background:

Gene ID:

SPIC

Uniprot

Q8N5J4

Synonyms:

Transcription factor Spi-C; SPIC;

Applications:

ELISA, WB

Immunogen:

Synthesized peptide derived from internal of human SPIC.

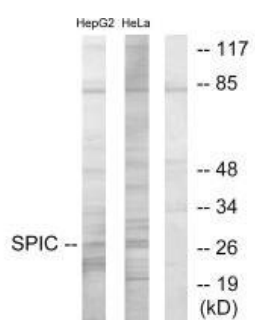
Recommended dilutions:

ELISA:1:2000-1:10000, WB:1:500-1:3000

Storage:

Rabbit IgG in phosphate buffered saline (without Mg²⁺ and Ca²⁺), pH 7.4, 150mM NaCl, 0.02% sodium azide and 50% glycerol.

Product Images



Western blot analysis of extracts from HepG2 cells and HeLa cells, using SPIC antibody.