

# SMARCC2 Antibody



PACO21904

---

## Product Information

**Size:**

100ul

**Reactivity:**

Human, Mouse

**Source:**

Rabbit

**Isotype:**

IgG

**Applications:**

ELISA, WB

**Recommended dilutions:**

ELISA:1:2000-1:10000, WB:1:500-1:3000

**Protein Background:**

**Gene ID:**

SMARCC2

**Uniprot**

Q8TAQ2

**Synonyms:**

SWI/SNF-related matrix-associated actin-dependent regulator of chromatin subfamily C member 2; SWI/SNF complex 170 kDa subunit; BRG1-associated factor 170; BAF170; SMARCC2

**Immunogen:**

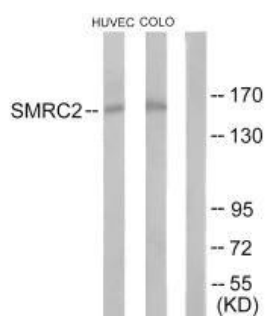
Synthesized peptide derived from internal of human SMRC2.

**Storage:**

Rabbit IgG in phosphate buffered saline (without Mg<sup>2+</sup> and Ca<sup>2+</sup>), pH 7.4, 150mM NaCl, 0.02% sodium azide and 50% glycerol.

## Product Images

---



Western blot analysis of extracts from HUVEC cells and COLO205 cells, using SMRC2 antibody.