

ORAOV1 Antibody



PACO21908

Product Information

Size:

100ul

Reactivity:

Human

Source:

Rabbit

Isotype:

Applications:

ELISA, WB

Recommended dilutions:

ELISA:1:2000-1:10000, WB:1:500-1:3000

Protein Background:

Gene ID:

ORAOV1

Uniprot

Q8WV07

Synonyms:

Oral cancer overexpressed protein 1; Tumor amplified and overexpressed sequence 1; ORAOV1; TAOS1;

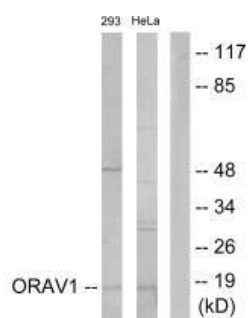
Immunogen:

Synthesized peptide derived from internal of human ORAV1.

Storage:

Rabbit IgG in phosphate buffered saline (without Mg²⁺ and Ca²⁺), pH 7.4, 150mM NaCl, 0.02% sodium azide and 50% glycerol.

Product Images



Western blot analysis of extracts from 293 cells and HeLa cells, using ORAV1 antibody.