

MAP4K1 Antibody



PACO21916

Product Information

Size:

100ul

Reactivity:

Human, Mouse

Source:

Rabbit

Isotype:

IgG

Applications:

ELISA, WB

Recommended dilutions:

ELISA:1:2000-1:10000, WB:1:500-1:3000

Protein Background:

May play a role in the response to environmental stress. Appears to act upstream of the JUN N-terminal pathway. May play a role in hematopoietic lineage decisions and growth regulation. Beausoleil S. A. , Proc. Natl. Acad. Sci. U. S. A. 101:12130-12135(2004).

Gene ID:

MAP4K1

Uniprot

Q92918

Synonyms:

Mitogen-activated protein kinase kinase kinase kinase 1; EC 2.7.11.1; MAPK/ERK kinase kinase kinase 1; MEK kinase kinase 1; MEKKK 1

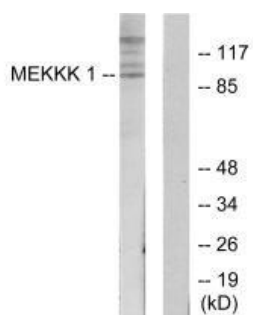
Immunogen:

Synthesized peptide derived from internal of human MEKKK 1.

Storage:

Rabbit IgG in phosphate buffered saline (without Mg²⁺ and Ca²⁺), pH 7.4, 150mM NaCl, 0.02% sodium azide and 50% glycerol.

Product Images



Western blot analysis of extracts from HepG2 cells, using MEKKK 1 antibody.