

CNKSR1 Antibody



PACO21922

Product Information

Size:

100ul

Reactivity:

Human, Mouse, Rat

Source:

Rabbit

Isotype:

IgG

Applications:

ELISA, WB

Recommended dilutions:

ELISA:1:2000-1:10000, WB:1:500-1:3000

Protein Background:

May function as an adapter protein or regulator of Ras signaling pathways. The MGC Project Team, Genome Res. 14:2121-2127(2004).

Gene ID:

CNKSR1

Uniprot

Q969H4

Synonyms:

Connector enhancer of KSR1; hCNK1; Connector enhancer of KSR-like; CNK homolog protein 1;

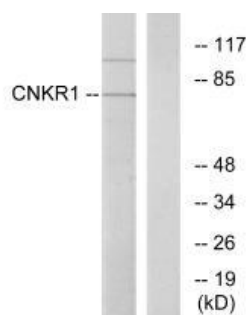
Immunogen:

Synthesized peptide derived from internal of human CNKR1.

Storage:

Rabbit IgG in phosphate buffered saline (without Mg²⁺ and Ca²⁺), pH 7.4, 150mM NaCl, 0.02% sodium azide and 50% glycerol.

Product Images



Western blot analysis of extracts from COLO cells, using CNKR1 antibody.