

PACO21925

Product Information

Size:

100ul

Reactivity:

Human, Mouse, Rat

Source:

Rabbit

Isotype:

Protein Background:

Gene ID:

ISL2

Uniprot

Q96A47

Synonyms:

Insulin gene enhancer protein ISL-2; Islet-2; ISL2;

Applications:

ELISA, WB

Immunogen:

Synthesized peptide derived from internal of human ISL2.

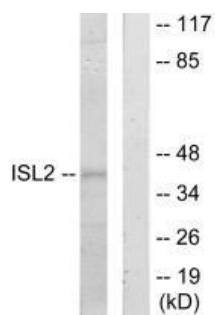
Recommended dilutions:

ELISA:1:2000-1:10000, WB:1:500-1:3000

Storage:

Rabbit IgG in phosphate buffered saline (without Mg²⁺ and Ca²⁺), pH 7.4, 150mM NaCl, 0.02% sodium azide and 50% glycerol.

Product Images



Western blot analysis of extracts from 293 cells, using ISL2 antibody.