

PACO21928

---

## Product Information

**Size:**

100ul

**Reactivity:**

Human

**Source:**

Rabbit

**Isotype:**

IgG

**Applications:**

ELISA, WB

**Recommended dilutions:**

ELISA:1:2000-1:10000, WB:1:500-1:3000

**Protein Background:**

Can phosphorylate inositol 2,4,5-triphosphate to inositol 2,4,5,6-tetraphosphate.

**Gene ID:**

ITPKCμ

**Uniprot**

Q96DU7

**Synonyms:**

Inositol-trisphosphate 3-kinase C; EC 2.7.1.127; Inositol 1; 4; 5-trisphosphate 3-kinase C

**Immunogen:**

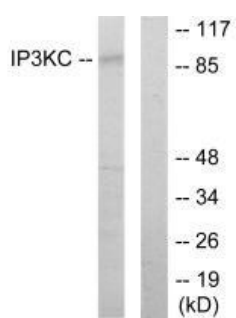
Synthesized peptide derived from internal of human IP3KC.

**Storage:**

Rabbit IgG in phosphate buffered saline (without Mg<sup>2+</sup> and Ca<sup>2+</sup>), pH 7.4, 150mM NaCl, 0.02% sodium azide and 50% glycerol.

## Product Images

---



Western blot analysis of extracts from HT-29 cells, using IP3KC antibody.