

ZNF668 Antibody



PACO21931

Product Information

Size:

100ul

Reactivity:

Human, Mouse

Source:

Rabbit

Isotype:

IgG

Applications:

ELISA, WB

Recommended dilutions:

ELISA:1:2000-1:10000, WB:1:500-1:3000

Protein Background:

May be involved in transcriptional regulation By similarity. Totoki Y. , Submitted (MAR-2005) to the EMBL/GenBank/DDBJ databases.

Gene ID:

ZNF668

Uniprot

Q96K58

Synonyms:

ZNF668; Zinc finger protein 668;

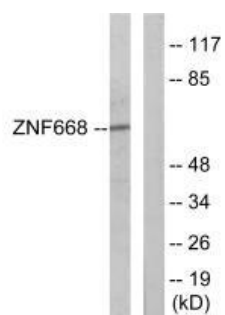
Immunogen:

Synthesized peptide derived from internal of human ZNF668.

Storage:

Rabbit IgG in phosphate buffered saline (without Mg²⁺ and Ca²⁺), pH 7.4, 150mM NaCl, 0.02% sodium azide and 50% glycerol.

Product Images



Western blot analysis of extracts from Jurkat cells, using ZNF668 antibody.