

# CIB3 Antibody



PACO21933

---

## Product Information

**Size:**

100ul

**Reactivity:**

Human, Mouse

**Source:**

Rabbit

**Isotype:**

**Applications:**

ELISA, WB

**Recommended dilutions:**

ELISA:1:2000-1:10000, WB:1:500-1:3000

**Protein Background:**

**Gene ID:**

CIB3

**Uniprot**

Q96Q77

**Synonyms:**

Calcium and integrin-binding family member 3; Kinase-interacting protein 3; KIP 3; CIB3; KIP3

**Immunogen:**

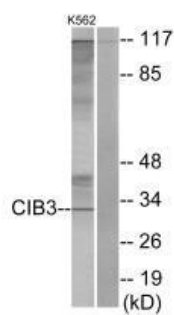
Synthesized peptide derived from C-terminal of human CIB3.

**Storage:**

Rabbit IgG in phosphate buffered saline (without Mg<sup>2+</sup> and Ca<sup>2+</sup>), pH 7.4, 150mM NaCl, 0.02% sodium azide and 50% glycerol.

## Product Images

---



Western blot analysis of extracts from K562 cells, using CIB3 antibody.