

FOXB1/FOXB2 Antibody



PACO21934

Product Information

Size:

100ul

Reactivity:

Human, Mouse

Source:

Rabbit

Isotype:

IgG

Applications:

ELISA, WB

Recommended dilutions:

ELISA:1:2000-1:10000, WB:1:500-1:3000

Protein Background:

Transcription factor. Cascio S. M. , Submitted (MAR-1998) to the EMBL/GenBank/DBJ databases.

Gene ID:

FOXB1/FOXB2

Uniprot

Q99853/Q5VYV0

Synonyms:

Forkhead box protein B1/2; Transcription factor FKH-5; FOXB1/2; FKH5;

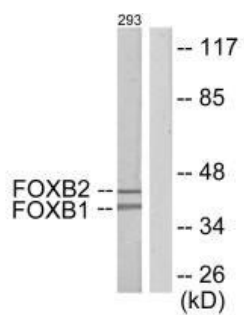
Immunogen:

Synthesized peptide derived from internal of human FOXB1/2.

Storage:

Rabbit IgG in phosphate buffered saline (without Mg²⁺ and Ca²⁺), pH 7.4, 150mM NaCl, 0.02% sodium azide and 50% glycerol.

Product Images



Western blot analysis of extracts from 293 cells, using FOXB1/2 antibody.