

### Product Information

**Size:**

100ul

**Reactivity:**

Human

**Source:**

Rabbit

**Isotype:**

IgG

**Applications:**

ELISA, WB

**Recommended dilutions:**

ELISA:1:2000-1:10000, WB:1:500-1:3000

**Protein Background:**

AS-C proteins are involved in the determination of the neuronal precursors in the peripheral nervous system and the central nervous system. Westerman B. A. , Placenta 22:511-518(2001).

**Gene ID:**

ASCL2

**Uniprot**

Q99929

**Synonyms:**

achaete-scute complex homolog 2 (Drosophila); achaete-scute complex-like 2; Achaete-scute homolog 2; ASCL2; ASH-2

**Immunogen:**

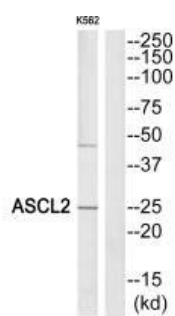
Synthesized peptide derived from Internal of human ASCL2.

**Storage:**

Rabbit IgG in phosphate buffered saline (without Mg<sup>2+</sup> and Ca<sup>2+</sup>), pH 7.4, 150mM NaCl, 0.02% sodium azide and 50% glycerol.

## Product Images

---



Western blot analysis of extracts from K562 cells, using ASCL2 antibody.