

ZSCAN16 Antibody



PACO21953

Product Information

Size:

100ul

Reactivity:

Human

Source:

Rabbit

Isotype:

IgG

Applications:

ELISA, WB

Recommended dilutions:

ELISA:1:2000-1:10000, WB:1:500-1:3000

Protein Background:

May be involved in transcriptional regulation. Mungall A. J. , Nature 425:805-811(2003).

Gene ID:

ZSCAN16

Uniprot

Q9H4T2

Synonyms:

Zinc finger and SCAN domain-containing protein 16; Zinc finger protein 435; Zinc finger protein 392; ZSCAN16; ZNF392

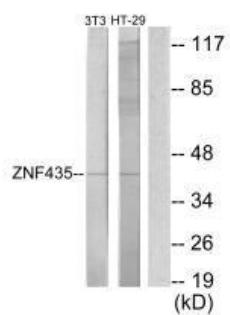
Immunogen:

Synthesized peptide derived from internal of human ZNF435.

Storage:

Rabbit IgG in phosphate buffered saline (without Mg²⁺ and Ca²⁺), pH 7.4, 150mM NaCl, 0.02% sodium azide and 50% glycerol.

Product Images



Western blot analysis of extracts from NIH-3T3 cells and HT-29 cells, using ZNF435 antibody.