

EPS8L2 Antibody



PACO21955

Product Information

Size:

100ul

Reactivity:

Human, Mouse

Source:

Rabbit

Isotype:

Applications:

ELISA, WB

Recommended dilutions:

ELISA:1:2000-1:10000, WB:1:500-1:3000

Protein Background:

Gene ID:

EPS8L2

Uniprot

Q9H6S3

Synonyms:

Epidermal growth factor receptor kinase substrate 8-like protein 2; Epidermal growth factor receptor pathway substrate 8-related protein 2; EPS8-like protein 2; EPS8L2; EPS8R2

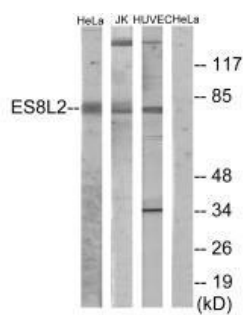
Immunogen:

Synthesized peptide derived from internal of human ES8L2.

Storage:

Rabbit IgG in phosphate buffered saline (without Mg²⁺ and Ca²⁺), pH 7.4, 150mM NaCl, 0.02% sodium azide and 50% glycerol.

Product Images



Western blot analysis of extracts from HeLa cells, Jurkat cells and HUVEC cells, using ES8L2 antibody.