

ARMCX1 Antibody



PACO21970

Product Information

Size:

100ul

Reactivity:

Human

Source:

Rabbit

Isotype:

IgG

Applications:

ELISA, WB

Recommended dilutions:

ELISA:1:2000-1:10000, WB:1:500-1:3000

Protein Background:

Ota T. , Nat. Genet. 36:40-45(2004).

Gene ID:

ARMCX1

Uniprot

Q9P291

Synonyms:

Armadillo repeat-containing X-linked protein 1; Protein ALEX1; ARM protein lost in epithelial cancers on chromosome X 1; ARMCX1; ALEX1

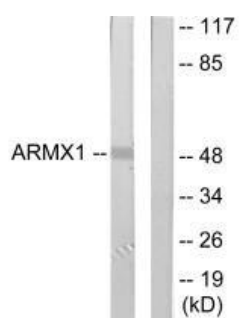
Immunogen:

Synthesized peptide derived from internal of human ARMX1.

Storage:

Rabbit IgG in phosphate buffered saline (without Mg²⁺ and Ca²⁺), pH 7.4, 150mM NaCl, 0.02% sodium azide and 50% glycerol.

Product Images



Western blot analysis of extracts from rat brain cells, using ARMX1 antibody.