

# HSFX1 Antibody



PACO21971

---

## Product Information

**Size:**

100ul

**Reactivity:**

Human

**Source:**

Rabbit

**Isotype:**

IgG

**Applications:**

ELISA, WB

**Recommended dilutions:**

ELISA:1:2000-1:10000, WB:1:500-1:3000

**Protein Background:**

Belongs to the HSF family. Wang L. , Submitted (APR-1999) to the EMBL/GenBank/DDBJ databases.

**Gene ID:**

HSFX1

**Uniprot**

Q9UBD0

**Synonyms:**

Heat shock transcription factor family X-linked 1; LW-1; HSFX1; hCG\_27154;

**Immunogen:**

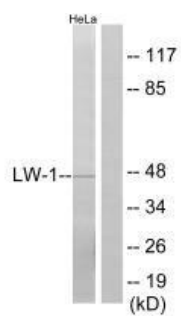
Synthesized peptide derived from N-terminal of human LW-1.

**Storage:**

Rabbit IgG in phosphate buffered saline (without Mg<sup>2+</sup> and Ca<sup>2+</sup>), pH 7.4, 150mM NaCl, 0.02% sodium azide and 50% glycerol.

## Product Images

---



Western blot analysis of extracts from HeLa cells, using LW-1 antibody.