

PACO21980

---

## Product Information

**Size:**

100ul

**Reactivity:**

Human

**Source:**

Rabbit

**Isotype:**

IgG

**Applications:**

ELISA, WB

**Recommended dilutions:**

ELISA:1:2000-1:10000, WB:1:500-1:3000

**Protein Background:**

Meiosis specific component of cohesin complex. The cohesin complex is required for the cohesion of sister chromatids after DNA replication. The cohesin complex apparently forms a large proteinaceous ring within which sister chromatids can be trapped. At anaphase, the complex is cleaved and dissociates from chromatin, allowing sister chromatids to segregate. The meiosis-specific cohesin complex probably replaces mitosis specific cohesin complex when it dissociates from chromatin during prophase I. By similarity. The German cDNA consortium; Submitted (JUL-2002) to the EMBL/GenBank/DDBJ databases.

**Gene ID:**

STAG3

**Uniprot**

Q9UJ98

**Synonyms:**

Cohesin subunit SA-3; Stromal antigen 3; Stromalin 3; SCC3 homolog 3; STAG3

**Immunogen:**

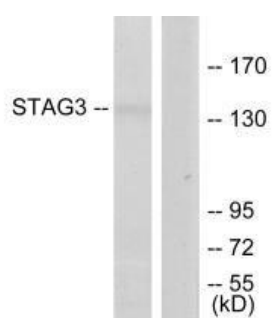
Synthesized peptide derived from C-terminal of human STAG3.

**Storage:**

Rabbit IgG in phosphate buffered saline (without Mg<sup>2+</sup> and Ca<sup>2+</sup>), pH 7.4, 150mM NaCl, 0.02% sodium azide and 50% glycerol.

## Product Images

---



Western blot analysis of extracts from Jurkat cells, using STAG3 antibody.