
Product Information

Size:

100ul

Reactivity:

Human

Source:

Rabbit

Isotype:

IgG

Applications:

ELISA, WB

Recommended dilutions:

ELISA:1:2000-1:10000, WB:1:500-1:3000

Protein Background:

Has a key role in phospholipid biosynthesis. Catalyzes the first step in phosphatidylethanolamine biosynthesis. Phosphorylates ethanolamine, and can also act on choline (in vitro). Has higher activity with ethanolamine. May not significantly contribute to in vivo phosphatidylcholine biosynthesis. Collins J. E. , Genome Biol. 5: RESEARCH84.1-RESEARCH84.11(2004).

Gene ID:

CHKB

Uniprot

Q9Y259

Synonyms:

Choline/ethanolamine kinase; Choline kinase beta (EC 2.7.1.32)(CK); Ethanolamine kinase (EC 2.7.1.82)(EK); CHKB; CHETK

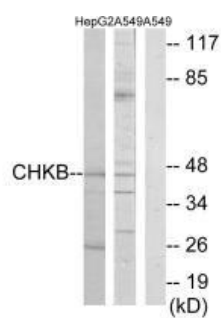
Immunogen:

Synthesized peptide derived from internal of human CHKB.

Storage:

Rabbit IgG in phosphate buffered saline (without Mg²⁺ and Ca²⁺), pH 7.4, 150mM NaCl, 0.02% sodium azide and 50% glycerol.

Product Images



Western blot analysis of extracts from HepG2 cells and A549 cells, using CHK2 antibody.