

ZNF337 Antibody



PACO21992

Product Information

Size:

100ul

Reactivity:

Human

Source:

Rabbit

Isotype:

IgG

Applications:

ELISA, WB

Recommended dilutions:

ELISA:1:2000-1:10000, WB:1:500-1:3000

Protein Background:

May be involved in transcriptional regulation. The MGC Project Team; Genome Res. 14:2121-2127(2004).

Gene ID:

ZNF337

Uniprot

Q9Y3M9

Synonyms:

Zinc finger protein 337; ZN337; ZNF337;

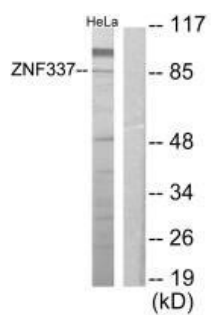
Immunogen:

Synthesized peptide derived from internal of human ZNF337.

Storage:

Rabbit IgG in phosphate buffered saline (without Mg²⁺ and Ca²⁺), pH 7.4, 150mM NaCl, 0.02% sodium azide and 50% glycerol.

Product Images



Western blot analysis of extracts from HeLa cells, using ZNF337 antibody.