

# STON1 Antibody



PACO21999

---

## Product Information

**Size:**

100ul

**Reactivity:**

Human

**Source:**

Rabbit

**Isotype:**

IgG

**Applications:**

ELISA, WB

**Recommended dilutions:**

ELISA:1:2000-1:10000, WB:1:500-1:3000

**Protein Background:**

May be involved in the endocytic machinery By similarity.

**Gene ID:**

STON1

**Uniprot**

Q9Y6Q2

**Synonyms:**

SBLF; STN1; stoned B/TFIIA-alpha/beta-like factor; STON1; stoned B-like factor

**Immunogen:**

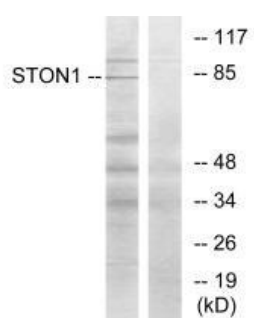
Synthesized peptide derived from C-terminal of human STON1.

**Storage:**

Rabbit IgG in phosphate buffered saline (without Mg<sup>2+</sup> and Ca<sup>2+</sup>), pH 7.4, 150mM NaCl, 0.02% sodium azide and 50% glycerol.

## Product Images

---



Western blot analysis of extracts from K562 cells, using STON1 antibody.