

ACTN1 Antibody



PACO22007

Product Information

Size:

100ul

Reactivity:

Human, Mouse, Rat

Source:

Rabbit

Isotype:

IgG

Applications:

ELISA, WB

Recommended dilutions:

ELISA:1:2000-1:10000, WB:1:500-1:3000

Protein Background:

F-actin cross-linking protein which is thought to anchor actin to a variety of intracellular structures. This is a bundling protein.

Gene ID:

ACTN1

Uniprot

P12814

Synonyms:

actinin 1 smooth muscle; actinin; alpha 1; ACTN1; alpha-actinin 1

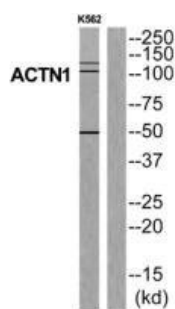
Immunogen:

Synthesized peptide derived from N-terminal of human ACTN1.

Storage:

Rabbit IgG in phosphate buffered saline (without Mg²⁺ and Ca²⁺), pH 7.4, 150mM NaCl, 0.02% sodium azide and 50% glycerol.

Product Images



Western blot analysis of extracts from K562 cells, using ACTN1 antibody.