

PACO22011

Product Information

Size:

100ul

Reactivity:

Human

Source:

Rabbit

Isotype:

IgG

Applications:

ELISA, WB

Recommended dilutions:

ELISA:1:2000-1:10000, WB:1:500-1:3000

Protein Background:

Cochaperone that stimulates HSP90 ATPase activity By similarity. May affect a step in the endoplasmic reticulum to Golgi trafficking.

Gene ID:

AHSA1

Uniprot

O95433

Synonyms:

AHA1; activator of heat shock 90kDa protein ATPase homolog 1;

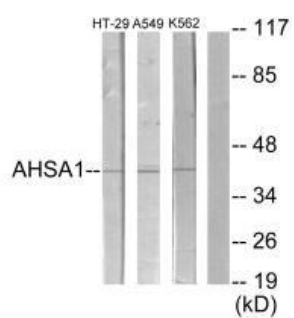
Immunogen:

Synthesized peptide derived from internal of human AHSA1.

Storage:

Rabbit IgG in phosphate buffered saline (without Mg²⁺ and Ca²⁺), pH 7.4, 150mM NaCl, 0.02% sodium azide and 50% glycerol.

Product Images



Western blot analysis of extracts from HT-29 cells, A549 cells and K562 cells, using AHSA1 antibody.