

PACO22022

Product Information

Size:

100ul

Reactivity:

Human, Mouse, Rat

Source:

Rabbit

Isotype:

IgG

Applications:

ELISA, WB

Recommended dilutions:

ELISA:1:2000-1:10000, WB:1:500-1:3000

Protein Background:

Adhesion molecule that engages in homo- and heterophilic interactions with the other nectin-like family members, leading to cell aggregation. Important for synapse organization, providing regulated trans-synaptic adhesion. Preferentially binds to oligodendrocytes.

Gene ID:

CADM2

Uniprot

Q8N3J6

Synonyms:

Cell adhesion molecule 2 [Precursor]; Immunoglobulin superfamily member 4D; Nectin-like protein 3; CADM2; IGSF4D

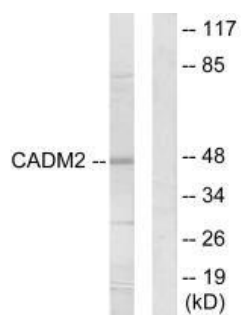
Immunogen:

Synthesized peptide derived from internal of human CADM2.

Storage:

Rabbit IgG in phosphate buffered saline (without Mg²⁺ and Ca²⁺), pH 7.4, 150mM NaCl, 0.02% sodium azide and 50% glycerol.

Product Images



Western blot analysis of extracts from HepG2 cells, using CADM2 antibody.