

PACO22047

Product Information

Size:

100ul

Reactivity:

Human

Source:

Rabbit

Isotype:

IgG

Applications:

ELISA, WB

Recommended dilutions:

ELISA:1:2000-1:10000, WB:1:500-1:3000

Protein Background:

Cytochromes P450 are a group of heme-thiolate monooxygenases. In liver microsomes, this enzyme is involved in an NADPH-dependent electron transport pathway. It oxidizes a variety of structurally unrelated compounds, including steroids, fatty acids, and xenobiotics.

Gene ID:

CYP2C18/CYP2C8/CYP2C9/CYP2C19

Uniprot

P33260/P10632/P11712/P33261

Synonyms:

CP2C1; CPCI; CYP11C18; EC 1.14.14.1; P450-6B/29C

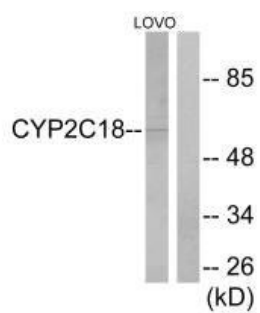
Immunogen:

Synthesized peptide derived from internal of human Cytochrome P450 2C8/9/18/19.

Storage:

Rabbit IgG in phosphate buffered saline (without Mg²⁺ and Ca²⁺), pH 7.4, 150mM NaCl, 0.02% sodium azide and 50% glycerol.

Product Images



Western blot analysis of extracts from LOVO cells, using Cytochrome P450 2C8/9/18/19 antibody.