

## Product Information

**Size:**

100ul

**Reactivity:**

Human, Mouse, Rat

**Source:**

Rabbit

**Isotype:**

IgG

**Applications:**

ELISA, WB

**Recommended dilutions:**

ELISA:1:2000-1:10000, WB:1:500-1:3000

**Protein Background:**

Ribosomes, the organelles that catalyze protein synthesis, consist of a small 40S subunit and a large 60S subunit. Together these subunits are composed of 4 RNA species and approximately 80 structurally distinct proteins. This gene encodes a member of the S17P family of ribosomal proteins that is a component of the 40S subunit. This gene is co-transcribed with the small nucleolar RNA gene U35B, which is located in the third intron. As is typical for genes encoding ribosomal proteins, there are multiple processed pseudogenes of this gene dispersed throughout the genome.

**Gene ID:**

RPS11

**Uniprot**

P62280

**Synonyms:**

40S ribosomal protein S11; ribosomal protein S11; RS11;

**Immunogen:**

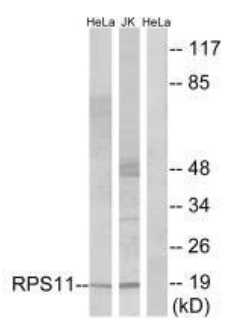
Synthesized peptide derived from internal of human RPS11.

**Storage:**

Rabbit IgG in phosphate buffered saline (without Mg<sup>2+</sup> and Ca<sup>2+</sup>), pH 7.4, 150mM NaCl, 0.02% sodium azide and 50% glycerol.

## Product Images

---



Western blot analysis of extracts from HeLa cells and Jurkat cells, using RPS11 antibody.