

PACO22097

---

## Product Information

**Size:**

100ul

**Reactivity:**

Human

**Source:**

Rabbit

**Isotype:**

IgG

**Applications:**

ELISA, WB

**Recommended dilutions:**

ELISA:1:2000-1:10000, WB:1:500-1:3000

**Protein Background:**

May play a role in compensating for the inactivated X-linked gene during spermatogenesis.

**Gene ID:**

RPL10L

**Uniprot**

Q96L21

**Synonyms:**

60S ribosomal protein L10-like; RL10L;

**Immunogen:**

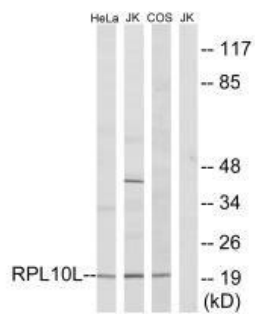
Synthesized peptide derived from internal of human RPL10L.

**Storage:**

Rabbit IgG in phosphate buffered saline (without Mg<sup>2+</sup> and Ca<sup>2+</sup>), pH 7.4, 150mM NaCl, 0.02% sodium azide and 50% glycerol.

## Product Images

---



Western blot analysis of extracts from HeLa cells, Jurkat cells and COS7 cells, using RPL10L antibody.