

# ABHD12 Antibody



PACO22110

---

## Product Information

**Size:**

100ul

**Reactivity:**

Human, Mouse, Rat

**Source:**

Rabbit

**Isotype:**

IgG

**Applications:**

ELISA, WB

**Recommended dilutions:**

ELISA:1:2000-1:10000, WB:1:500-1:3000

**Protein Background:**

Lysophosphatidylserine (LPS) lipase, that plays a key role in the central nervous system. Represents a major LPS lipase in the brain. Has 2-arachidonoylglycerol (2-AG) hydrolase activity. May act as a regulator of endocannabinoid signaling pathways.

**Gene ID:**

ABHD12

**Uniprot**

Q8N2K0

**Synonyms:**

ABD12; ABHD12; abhydrolase domain containing 12;

**Immunogen:**

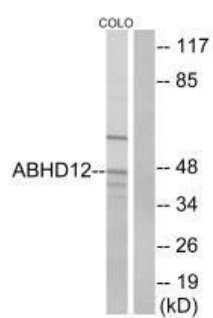
Synthesized peptide derived from internal of human ABHD12.

**Storage:**

Rabbit IgG in phosphate buffered saline (without Mg<sup>2+</sup> and Ca<sup>2+</sup>), pH 7.4, 150mM NaCl, 0.02% sodium azide and 50% glycerol.

## Product Images

---



Western blot analysis of extracts from COLO cells, using ABHD12 antibody.