

# TMEM237 Antibody



PACO22144

---

## Product Information

**Size:**

100ul

**Reactivity:**

Human, Mouse

**Source:**

Rabbit

**Isotype:**

IgG

**Applications:**

ELISA, WB

**Recommended dilutions:**

ELISA:1:2000-1:10000, WB:1:500-1:3000

**Protein Background:**

Component of the transition zone in primary cilia. Required for ciliogenesis.

**Gene ID:**

TMEM237

**Uniprot**

Q96Q45

**Synonyms:**

AL2S4; amyotrophic lateral sclerosis 2 chromosomal region candidate gene 4;

**Immunogen:**

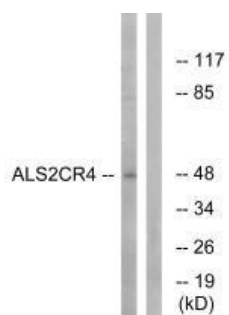
Synthesized peptide derived from internal of human ALS2CR4.

**Storage:**

Rabbit IgG in phosphate buffered saline (without Mg<sup>2+</sup> and Ca<sup>2+</sup>), pH 7.4, 150mM NaCl, 0.02% sodium azide and 50% glycerol.

## Product Images

---



Western blot analysis of extracts from Jurkat cells, using ALS2CR4 antibody.