

# ANXA10 Antibody



PACO22149

---

## Product Information

**Size:**

100ul

**Reactivity:**

Human

**Source:**

Rabbit

**Isotype:**

IgG

**Applications:**

ELISA, WB

**Recommended dilutions:**

ELISA:1:2000-1:10000, WB:1:500-1:3000

**Protein Background:**

This gene encodes a member of the annexin family. Members of this calcium-dependent phospholipid-binding protein family play a role in the regulation of cellular growth and in signal transduction pathways. The function of this gene has not yet been determined.

**Gene ID:**

ANXA10

**Uniprot**

Q9UJ72

**Synonyms:**

annexin 14; annexin A10; annexin-14; ANX10; ANX14

**Immunogen:**

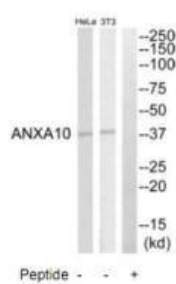
Synthesized peptide derived from C-terminal of human ANXA10.

**Storage:**

Rabbit IgG in phosphate buffered saline (without Mg<sup>2+</sup> and Ca<sup>2+</sup>), pH 7.4, 150mM NaCl, 0.02% sodium azide and 50% glycerol.

## Product Images

---



Western blot analysis of extracts from HeLa cell and NIH-3T3 cells, using ANXA10 antibody.