

PACO22154

---

## Product Information

**Size:**

100ul

**Reactivity:**

Human

**Source:**

Rabbit

**Isotype:**

IgG

**Applications:**

ELISA, WB

**Recommended dilutions:**

ELISA:1:2000-1:10000, WB:1:500-1:3000

**Protein Background:**

Forms a water-specific channel that provides the plasma membranes of red cells and kidney proximal tubules with high permeability to water, thereby permitting water to move in the direction of an osmotic gradient.

**Gene ID:**

AQP1

**Uniprot**

P29972

**Synonyms:**

AQP-1; AQP-CHIP; aquaporin 1; aquaporin-1; aquaporin-CHIP

**Immunogen:**

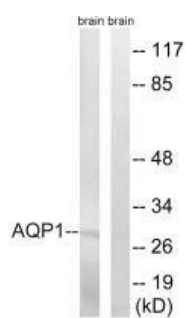
Synthesized peptide derived from internal of human AQP1.

**Storage:**

Rabbit IgG in phosphate buffered saline (without Mg<sup>2+</sup> and Ca<sup>2+</sup>), pH 7.4, 150mM NaCl, 0.02% sodium azide and 50% glycerol.

## Product Images

---



Western blot analysis of extracts from rat brain cells, using AQP1 antibody.