

# AQP12A Antibody



PACO22155

---

## Product Information

**Size:**

100ul

**Reactivity:**

Human

**Source:**

Rabbit

**Isotype:**

IgG

**Applications:**

ELISA, WB

**Recommended dilutions:**

ELISA:1:2000-1:10000, WB:1:500-1:3000

**Protein Background:**

Aquaporins facilitate the transport of water and small neutral solutes across cell membranes By similarity.

**Gene ID:**

AQP12A

**Uniprot**

Q8IXF9

**Synonyms:**

Aquaporin-12A; AQP-12; AQP12A; AQP12; AQPX2

**Immunogen:**

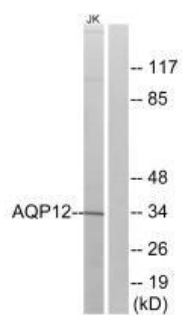
Synthesized peptide derived from internal of human AQP12.

**Storage:**

Rabbit IgG in phosphate buffered saline (without Mg<sup>2+</sup> and Ca<sup>2+</sup>), pH 7.4, 150mM NaCl, 0.02% sodium azide and 50% glycerol.

## Product Images

---



Western blot analysis of extracts from Jurkat cells, using AQP12 antibody.