

ATPAF2 Antibody



PACO22164

Product Information

Size:

100ul

Reactivity:

Human, Mouse

Source:

Rabbit

Isotype:

IgG

Applications:

ELISA, WB

Recommended dilutions:

ELISA:1:2000-1:10000, WB:1:500-1:3000

Protein Background:

May play a role in the assembly of the F1 component of the mitochondrial ATP synthase (ATPase).

Gene ID:

ATPAF2

Uniprot

Q8N5M1

Synonyms:

ATP synthase mitochondrial F1 complex assembly factor 2; ATP12; ATPF2;

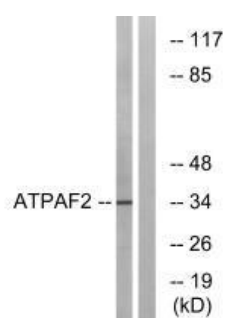
Immunogen:

Synthesized peptide derived from internal of human ATPAF2.

Storage:

Rabbit IgG in phosphate buffered saline (without Mg²⁺ and Ca²⁺), pH 7.4, 150mM NaCl, 0.02% sodium azide and 50% glycerol.

Product Images



Western blot analysis of extracts from Jurkat cells, using ATPAF2 antibody.