

# DQX1 Antibody



PACO22182

---

## Product Information

**Size:**

100ul

**Reactivity:**

Human, Mouse

**Source:**

Rabbit

**Isotype:**

IgG

**Applications:**

ELISA, WB

**Recommended dilutions:**

ELISA:1:2000-1:10000, WB:1:500-1:3000

**Protein Background:**

3 isoforms of the human protein are produced by alternative splicing.

**Gene ID:**

DQX1

**Uniprot**

Q8TE96

**Synonyms:**

ATP-dependent RNA helicase DQX1; DEAQ box 1; DEAQ RNA-dependent ATPase DQX1; EC 3.6.1. -;

**Immunogen:**

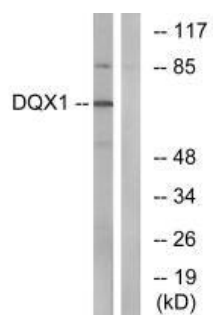
Synthesized peptide derived from internal of human DQX1.

**Storage:**

Rabbit IgG in phosphate buffered saline (without Mg<sup>2+</sup> and Ca<sup>2+</sup>), pH 7.4, 150mM NaCl, 0.02% sodium azide and 50% glycerol.

## Product Images

---



Western blot analysis of extracts from COS-7 cells, using DQX1 antibody.