

GUSBP1 Antibody



PACO22203

Product Information

Size:

100ul

Reactivity:

Human

Source:

Rabbit

Isotype:

IgG

Applications:

ELISA, WB

Recommended dilutions:

ELISA:1:2000-1:10000, WB:1:500-1:3000

Protein Background:**Gene ID:**

GUSBP1

Uniprot

Q9NQQ0/Q15487/Q15486/Q15488/A6NI90/A8K

Synonyms:

Beta-glucuronidase-like protein 1; SMA3-like protein;

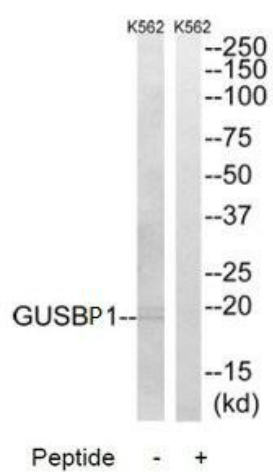
Immunogen:

Synthesized peptide derived from internal of human GUSBP1.

Storage:

Rabbit IgG in phosphate buffered saline (without Mg²⁺ and Ca²⁺), pH 7.4, 150mM NaCl, 0.02% sodium azide and 50% glycerol.

Product Images



Western blot analysis of extracts from K562 cells, using GUSBP1 antibody.