

BMP8B Antibody



PACO22206

Product Information

Size:

100ul

Reactivity:

Human

Source:

Rabbit

Isotype:

IgG

Applications:

ELISA, WB

Recommended dilutions:

ELISA:1:2000-1:10000, WB:1:500-1:3000

Protein Background:

Induces cartilage and bone formation. May be the osteoinductive factor responsible for the phenomenon of epithelial osteogenesis. Plays a role in calcium regulation and bone homeostasis By similarity.

Gene ID:

BMP8B

Uniprot

P34820

Synonyms:

Bone morphogenetic protein 8B; BMP-8B; BMP-8; BMP8; Osteogenic protein 2

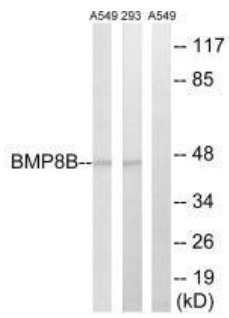
Immunogen:

Synthesized peptide derived from internal of human BMP8B.

Storage:

Rabbit IgG in phosphate buffered saline (without Mg²⁺ and Ca²⁺), pH 7.4, 150mM NaCl, 0.02% sodium azide and 50% glycerol.

Product Images



Western blot analysis of extracts from 293 cells and A549 cells, using BMP8B antibody.