

BAIAP2L1 Antibody



PACO22208

Product Information

Size:

100ul

Reactivity:

Human

Source:

Rabbit

Isotype:

IgG

Applications:

ELISA, WB

Recommended dilutions:

ELISA:1:2000-1:10000, WB:1:500-1:3000

Protein Background:

May function as adapter protein. Involved in the formation of clusters of actin bundles. Plays a role in the reorganization of the actin cytoskeleton in response to bacterial infection.

Gene ID:

BAIAP2L1

Uniprot

Q9UHR4

Synonyms:

BAIAP2L1; BI2L1;

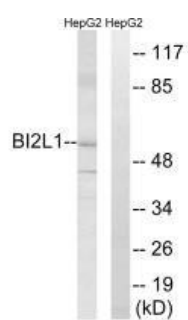
Immunogen:

Synthesized peptide derived from internal of human BAIAP2L1.

Storage:

Rabbit IgG in phosphate buffered saline (without Mg²⁺ and Ca²⁺), pH 7.4, 150mM NaCl, 0.02% sodium azide and 50% glycerol.

Product Images



Western blot analysis of extracts from HepG2 cells, using BAIAP2L1 antibody.