

Product Information

Size:

100ul

Reactivity:

Human, Mouse

Source:

Rabbit

Isotype:

IgG

Applications:

ELISA, WB

Recommended dilutions:

ELISA:1:2000-1:10000, WB:1:500-1:3000

Protein Background:

Calcium-independent phospholipase A2, which catalyzes the hydrolysis of the sn-2 position of glycerophospholipids, PtdSer and to a lower extent PtdCho. Cleaves membrane phospholipids.

Gene ID:

PNPLA8

Uniprot

Q9NP80

Synonyms:

calcium-independent phospholipase A2-gamma; EC 3.1.1.5; intracellular membrane-associated calcium-independent phospholipase A2 gamma; iPLA2-gamma; patatin-like phospholipase domain-containing protein 8

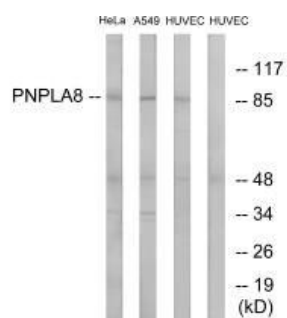
Immunogen:

Synthesized peptide derived from internal of human PNPLA8.

Storage:

Rabbit IgG in phosphate buffered saline (without Mg²⁺ and Ca²⁺), pH 7.4, 150mM NaCl, 0.02% sodium azide and 50% glycerol.

Product Images



Western blot analysis of extracts from HeLa cells, A549 cells and HUVEC cells, using PNPLA8 antibody.