

PACO22229

Product Information

Size:

100ul

Reactivity:

Human

Source:

Rabbit

Isotype:

IgG

Applications:

ELISA, WB

Recommended dilutions:

ELISA:1:2000-1:10000, WB:1:500-1:3000

Protein Background:

Catalyzes the transfer of sulfate to position 4 of non-reducing N-acetylgalactosamine (GalNAc) residues in both N-glycans and O-glycans. Required for biosynthesis of glycoprotein hormones lutropin and thyrotropin, by mediating sulfation of their carbohydrate structures. Only active against terminal GalNAcbeta1, GalNAcbeta. Not active toward chondroitin.

Gene ID:

CHST8

Uniprot

Q9H2A9

Synonyms:

carbohydrate (N-acetylgalactosamine 4-O) sulfotransferase 8; carbohydrate sulfotransferase 8; EC 2.8.2. -; GalNAc-4-O-sulfotransferase 1; GalNAc-4-ST1

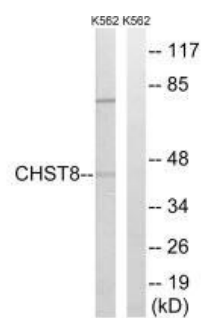
Immunogen:

Synthesized peptide derived from internal of human CHST8.

Storage:

Rabbit IgG in phosphate buffered saline (without Mg²⁺ and Ca²⁺), pH 7.4, 150mM NaCl, 0.02% sodium azide and 50% glycerol.

Product Images



Western blot analysis of extracts from K562 cells, using CHST8 antibody.