

PACO22241

---

## Product Information

**Size:**

100ul

**Reactivity:**

Human

**Source:**

Rabbit

**Isotype:**

IgG

**Applications:**

ELISA, WB

**Recommended dilutions:**

ELISA:1:2000-1:10000, WB:1:500-1:3000

**Protein Background:**

The 83 kDa subunit binds and stabilizes the catalytic subunit at 37 degrees Celsius and keeps it in circulation. Under some circumstances it may be an allosteric modifier of the catalytic subunit.

**Gene ID:**

CPN2

**Uniprot**

P22792

**Synonyms:**

ACBP; arginine carboxypeptidase (carboxypeptidase N); Carboxypeptidase N 83 kDa chain; Carboxypeptidase N large subunit; Carboxypeptidase N polypeptide 2

**Immunogen:**

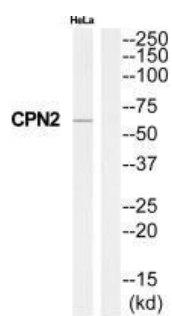
Synthesized peptide derived from C-terminal of human CPN2.

**Storage:**

Rabbit IgG in phosphate buffered saline (without Mg<sup>2+</sup> and Ca<sup>2+</sup>), pH 7.4, 150mM NaCl, 0.02% sodium azide and 50% glycerol.

## Product Images

---



Western blot analysis of extracts from HeLa cells, using CPN2 antibody.