

PACO22242

Product Information

Size:

100ul

Reactivity:

Human

Source:

Rabbit

Isotype:

IgG

Applications:

ELISA, WB

Recommended dilutions:

ELISA:1:2000-1:10000, WB:1:500-1:3000

Protein Background:

Belongs to the immunoglobulin superfamily. CEA family. 3 isoforms of the human protein are produced by alternative splicing. Note: This description may include information from UniProtKB.

Gene ID:

CEACAM21

Uniprot

Q3KPI0

Synonyms:

Carcinoembryonic antigen-related cell adhesion molecule 21;

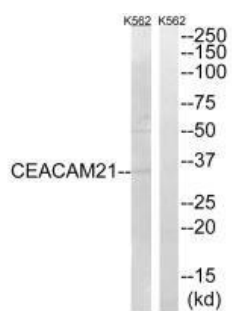
Immunogen:

Synthesized peptide derived from internal of human CEACAM21.

Storage:

Rabbit IgG in phosphate buffered saline (without Mg²⁺ and Ca²⁺), pH 7.4, 150mM NaCl, 0.02% sodium azide and 50% glycerol.

Product Images



Western blot analysis of extracts from K562 cells, using CEACAM21 antibody.