

## Product Information

**Size:**

100ul

**Reactivity:**

Human

**Source:**

Rabbit

**Isotype:**

IgG

**Applications:**

ELISA, WB

**Recommended dilutions:**

ELISA:1:2000-1:10000, WB:1:500-1:3000

**Protein Background:**

Part of the tectonic-like complex which is required for tissue-specific ciliogenesis and may regulate ciliary membrane composition By similarity. Activates ATF4-mediated transcription. Required for the correct localization of ciliary and phototransduction proteins in retinal photoreceptor cells; may play a role in ciliary transport processes.

**Gene ID:**

CEP290

**Uniprot**

O15078

**Synonyms:**

CE290; centrosomal protein Cep290; CTCL tumor antigen se2-2; JBTS5; JBTS6

**Immunogen:**

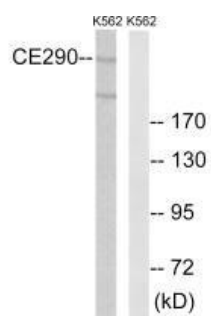
Synthesized peptide derived from internal of human CEP290.

**Storage:**

Rabbit IgG in phosphate buffered saline (without Mg<sup>2+</sup> and Ca<sup>2+</sup>), pH 7.4, 150mM NaCl, 0.02% sodium azide and 50% glycerol.

## Product Images

---



Western blot analysis of extracts from K562 cells, using CEP290 antibody.