

CBLN2 Antibody



PACO22257

Product Information

Size:

100ul

Reactivity:

Human, Mouse, Rat

Source:

Rabbit

Isotype:

IgG

Applications:

ELISA, WB

Recommended dilutions:

ELISA:1:2000-1:10000, WB:1:500-1:3000

Protein Background:

May play role in synaptogenesis induction By similarity.

Gene ID:

CBLN2

Uniprot

Q8IUUK8

Synonyms:

cerebellin-2; UNQ1892/PRO4338;

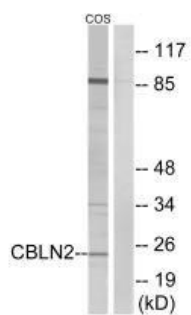
Immunogen:

Synthesized peptide derived from internal of human CBLN2.

Storage:

Rabbit IgG in phosphate buffered saline (without Mg²⁺ and Ca²⁺), pH 7.4, 150mM NaCl, 0.02% sodium azide and 50% glycerol.

Product Images



Western blot analysis of extracts from COS cells, using CBLN2 antibody.