

CLIC6 Antibody



PACO22264

Product Information

Size:

100ul

Reactivity:

Human

Source:

Rabbit

Isotype:

IgG

Applications:

ELISA, WB

Recommended dilutions:

ELISA:1:2000-1:10000, WB:1:500-1:3000

Protein Background:

May insert into membranes and form chloride ion channels. May play a critical role in water-secreting cells, possibly through the regulation of chloride ion transport By similarity.

Gene ID:

CLIC6

Uniprot

Q96NY7

Synonyms:

chloride channel A; chloride intracellular channel 6; CLIC1L;

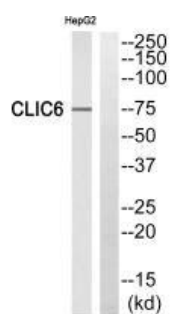
Immunogen:

Synthesized peptide derived from internal of human CLIC6.

Storage:

Rabbit IgG in phosphate buffered saline (without Mg²⁺ and Ca²⁺), pH 7.4, 150mM NaCl, 0.02% sodium azide and 50% glycerol.

Product Images



Western blot analysis of extracts from HepG2 cells, using CLIC6 antibody.